



WHY **SUPRASORB® P SENSITIVE**
IS THE FOAM FOR YOUR PATIENTS

11 NOVEMBER
2021

SIMON BARRETT
ADAM OCCLESHAW

LUNCHTIME
13:00 - 13:45

Discussing: Suprasorb® P Sensitive





Live session featuring **Q&A**

The status quo: today's world and perspective

Wound prevalence continues to concern:

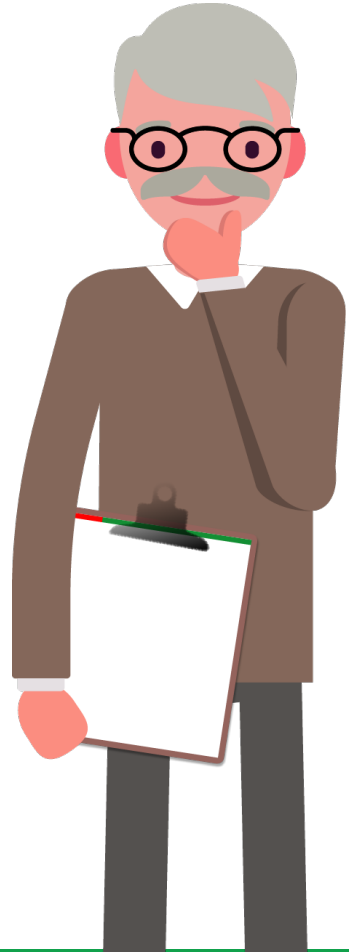
- **3.9 million wounds** and **7%** of the UK population have an active wound requiring intervention (Guest et al, 2020)
- **71%** increase in wound prevalence (Guest et al, 2020)
- **48%** increase in resource/costs in wound management (Guest et al, 2020)
- Exudate can range from **0.17g/cm² to 0.86g/cm²** over 24 hours (World Union of Wound Healing Societies [WUWHS], 2019)
- **54.4 million** healthcare professional/patient wound care visits (Guest et al, 2020).

The status quo: today's world and perspective

Silicone foam usage in 2020:

- **11.8** million silicone foam dressings used in 2020 versus 7 million superabsorbent dressings (GPrX, 2020)
- **£30 million** spent on foam dressings versus £16 million on superabsorbent dressings (GPrX, 2020).

The problem with the status quo



Guest data (Guest et al, 2020):

- Wound care prevalence
- Types of wounds
- Range of exudate.

NHS challenges:

- Time/re-dressing
- Patient outcomes.

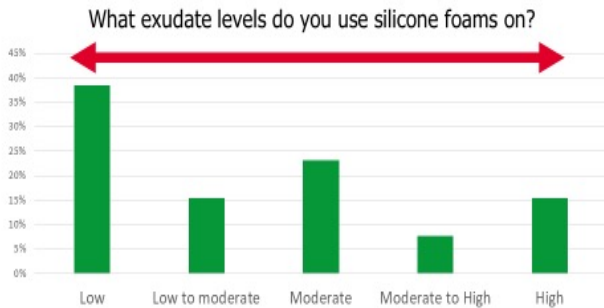
Silicone foam usage:

- Why so popular?
- Where are they meant to be used?

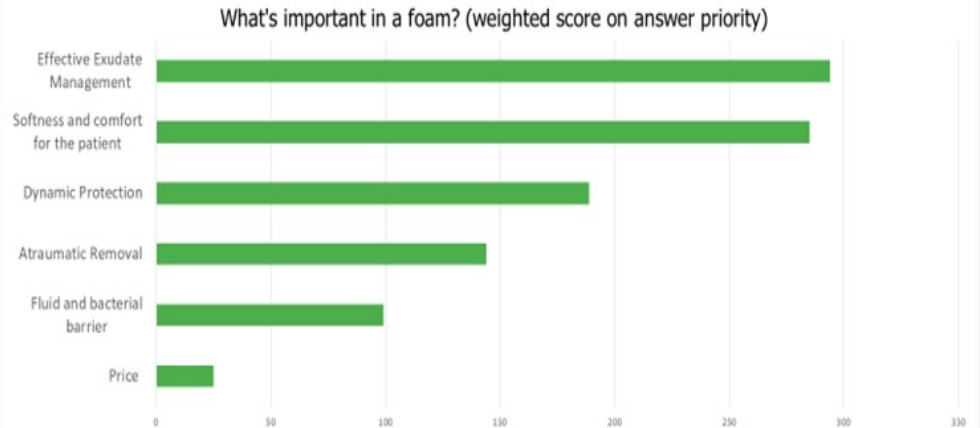
Your responses from our last virtual lunch meeting support this further

What type of wounds do you use silicone-based foams on?

- **Silicone-based foams are suitable for a wide range of wounds** — is this versatility our biggest challenge?
- **Skin tears and ulcers** (mixed) were common answers



What's the must have feature of a foam?



The solution



Efficient Exudate Management



High absorbency³
High MVTR³

Softness & Comfort



OptiSil Technology offers soft but effective adherence⁴
2 layers of PU foam⁵

Dynamic Protection

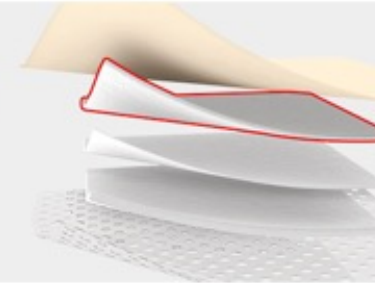


Fluid and bacterial barrier⁶
Designed to prevent lateral shear forces⁵



Supporting healthcare professionals with:

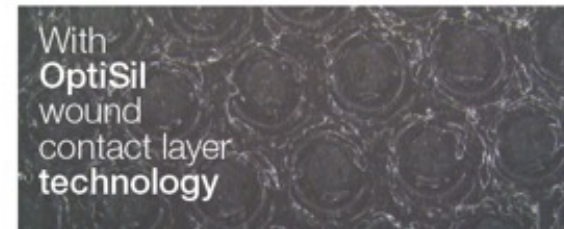
Patient benefits built into every layer



A full range of shape and sizes for all wound types



With OptiSil wound contact layer technology

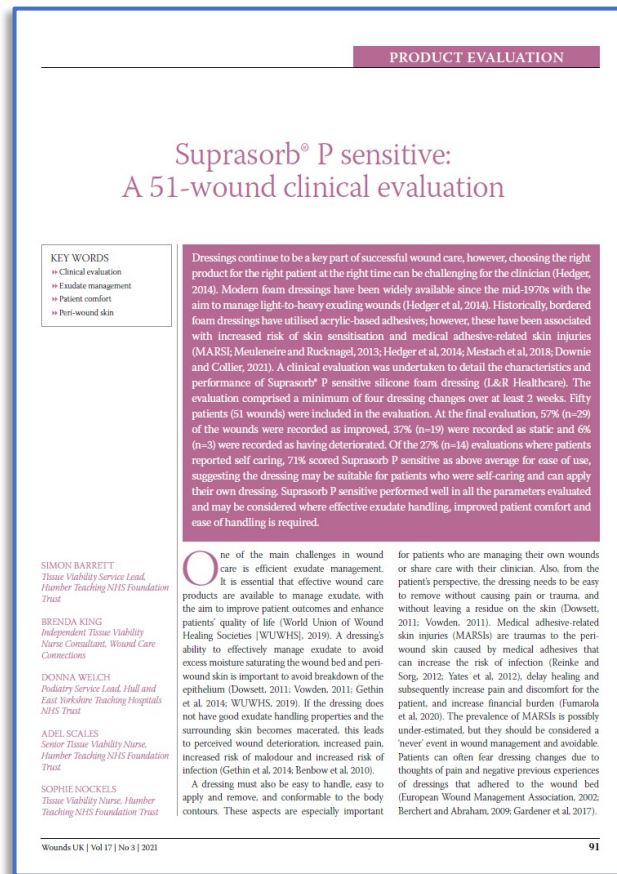


Challenges and temptations

- New products can offer significant improvements to patient outcomes and budget impact
- Time pressures may impact on the ability to accommodate robust evaluations to allow confidence in new products
- Small sample groups may give inflated positives or inflated negatives.

How can industry do more to support the NHS and clinicians to instil confidence in new products?

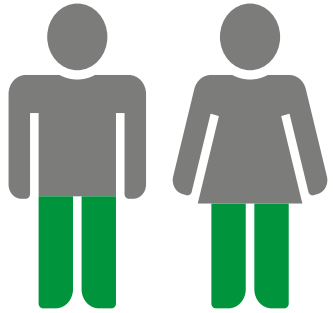
Building robust evidence



- Primary outcomes to achieve — why did we aim to achieve this
- Design — range of patients, wounds, and exudate
- Initial results
- End results
- Clinician overall feedback
- Patient overall feedback.

(Barrett et al, 2021)

How was the study robust?

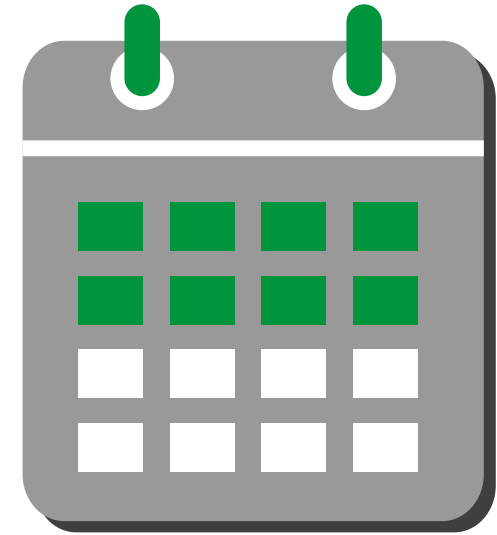


50 patients:

Average age – 71 (42–99)

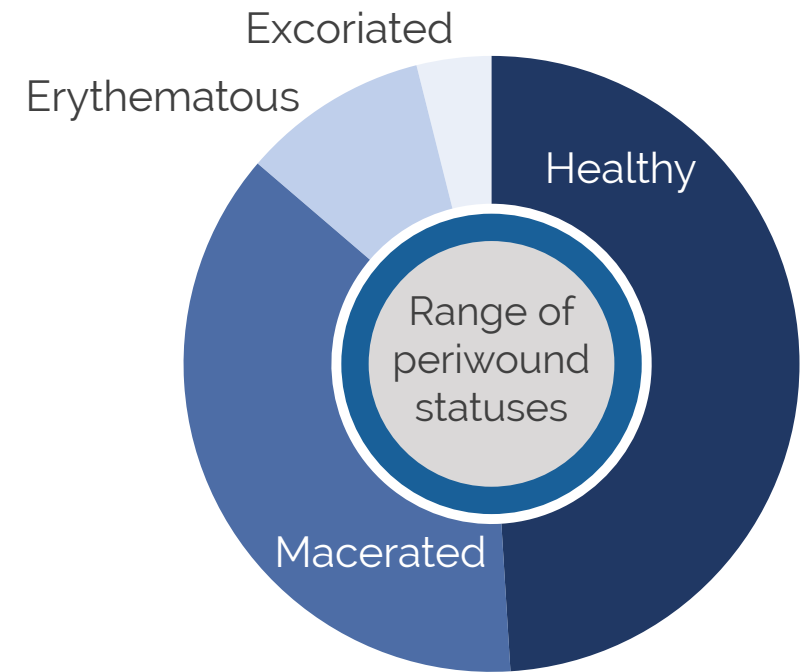
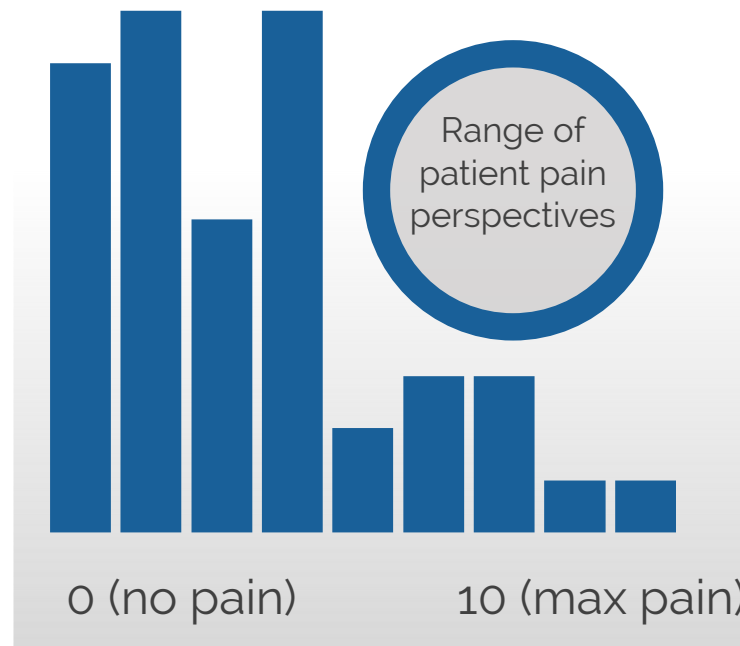
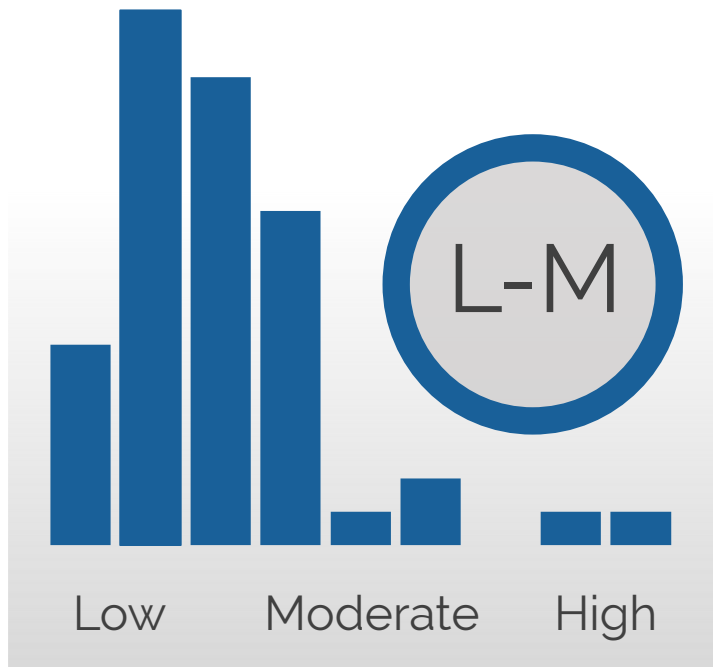
20 Male

30 Female.

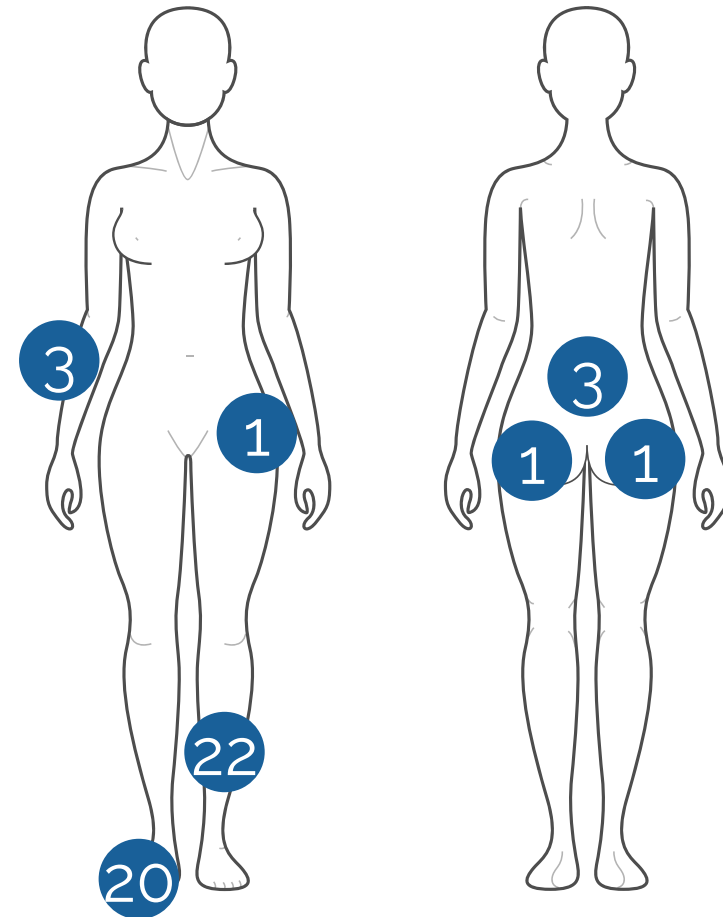
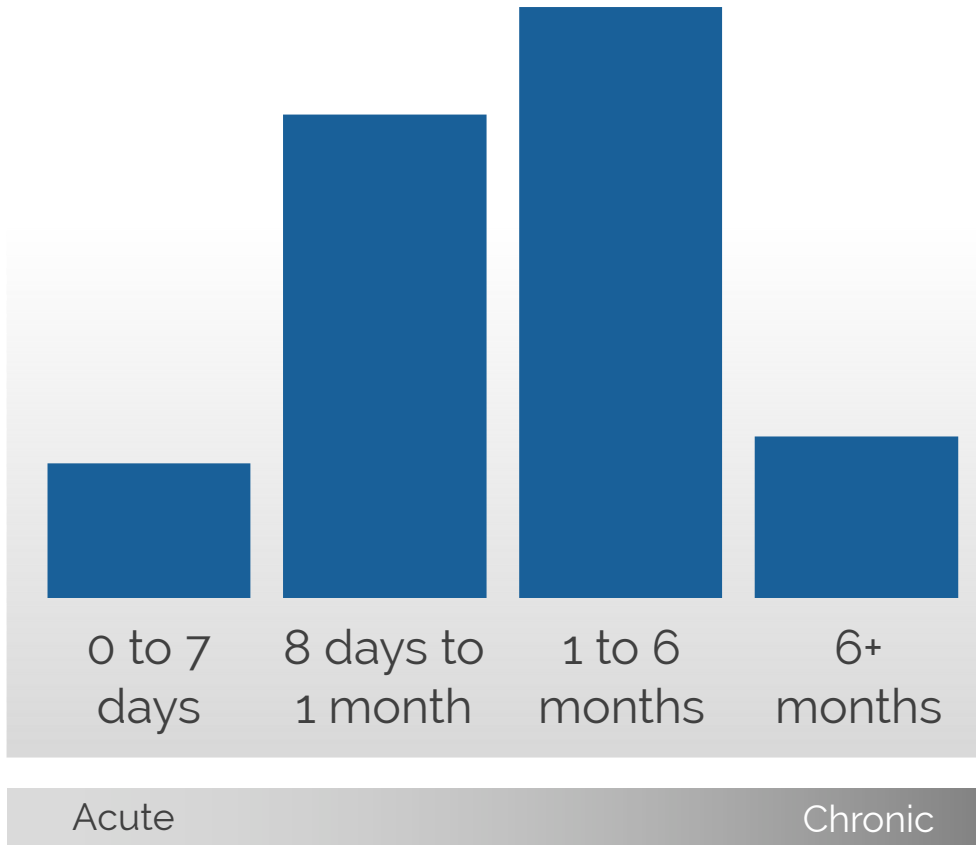


2 weeks

How was the study robust?



How was the study robust?



Suprasorb® P sensitive was put to the test

The study was wide ranging and representative of general practice:

- ✓ Large number of patients (n=50)
- ✓ Range of patients, sex, age and pain thresholds
- ✓ Range of wound types
- ✓ Range of periwound status
- ✓ Range of exudate challenges
- ✓ Range of acute and chronic wounds (n=51)
- ✓ Long duration and includes four dressing changes
- ✓ Range of market leading previous foams to compare.

Can Suprasorb® P sensitive deliver

Exudate control?

Atraumatic removal?

Periwound protection?

Clinician preference?

Patient preference?

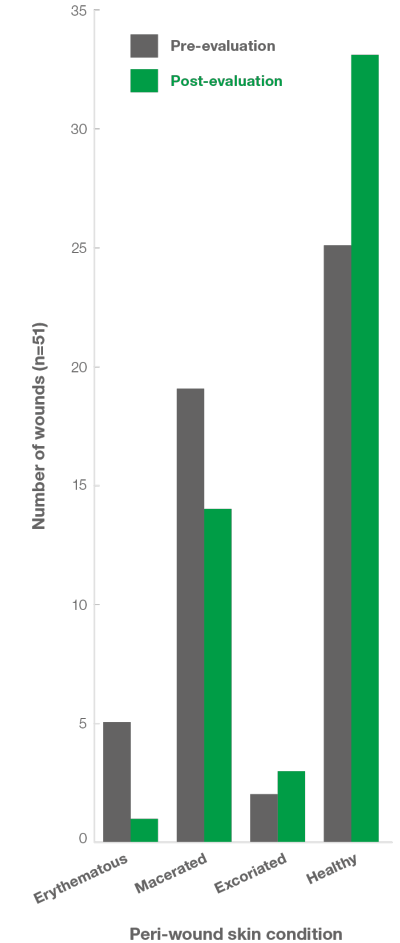
The results

	Ease of application	Conformability	Patient comfort	Exudate control	Atraumatic removal	Clinician score
First application first impressions	38% Better 62% Same 0% Worse	40% Better 60% Same 0% Worse	36% Better 64% Same 0% Worse	Not recorded as first application		
Post evaluation four changes	33% Excellent 32% Very good 33% Good 1% Poor	37.5% Excellent 27% Very good 35.5% Good 0% Poor	88% (Satisfactory or better)	12% Excellent 37% Very good 43% Good 8% Poor	39% Excellent 27% Very good 32% Good 2% Poor	80% (Satisfactory or better)

In summary

Suprasorb® P sensitive received consistently high scores.

	Ease of application	Conformability	Patient comfort	Exudate control	Atraumatic removal	Clinician score
First application first impressions	100% (Excellent, very good or good)	100% (Excellent, very good or good)	100% (Excellent, very good or good)	Not recorded as first application		
Post evaluation four changes	99% (Excellent, very good or good)	100% (Excellent, very good or good)	88% (Satisfactory or better)	92% (Excellent, very good or good)	98% (Excellent, very good or good)	80% (Satisfactory or better)



Case study 1

Case 1: 79-year-old male

- Presented with skin tear on his right elbow for three days
- Treatment to this point included an alternative silicone foam dressing
- Initial wound measurements 3cm x 2.5cm.

Initial assessment of wound:

- 50% granulation, 50% devitalised tissue in wound bed
- Healthy periwound skin
- 1/10 exudate volume (low)
- 1/10 pain level
- Suprasorb® P sensitive planned twice a week.

Initial assessment



Case study 1

Case 1: 79-year-old male

11 days into treatment:

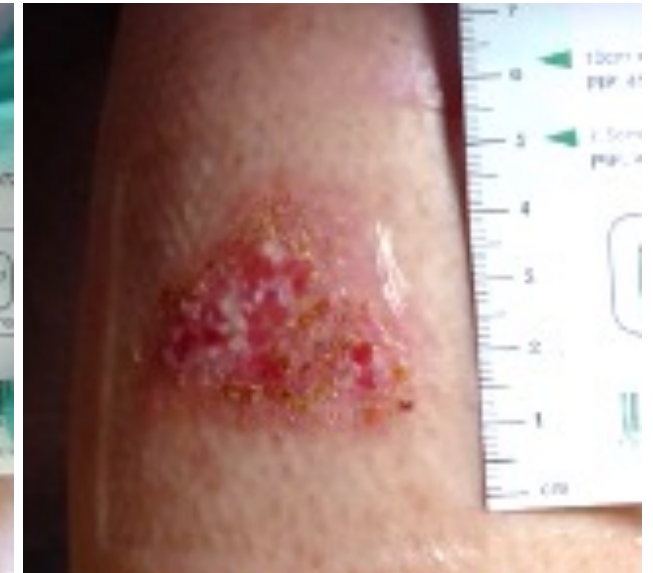
- 'Improving' wound status
- Periwound skin remained 'healthy'
- Exudate volume remained low
- Wound size reduced to 2.2cm x 1.5cm.

Rated '**Excellent**' for:

- ease of application,
- absorption,
- patient comfort,
- ease of removal and
- conformability.



Initial assessment



11 days of treatment

Overall clinician score 9/10
Overall patient score 10/10

Case study 2

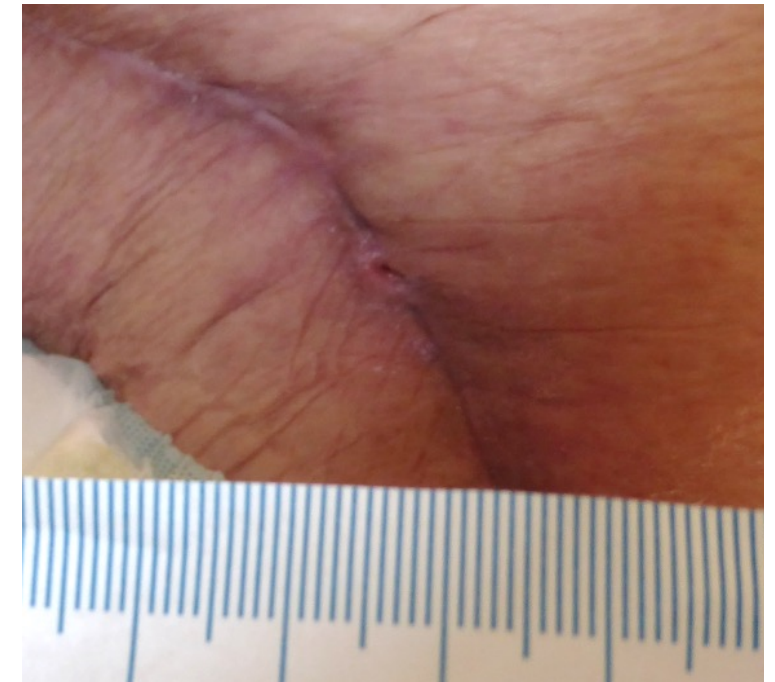
Case 2: 83-year-old female

- Presented with a surgical wound on right hip present for two months
- Wound position along suture line of 1cm depth.

Initial assessment of wound;

- 100% granulating
- Healthy periwound status
- 3/10 exudate volume (moderate)
- 2/10 pain level with itch.

Initial assessment



Case study 2

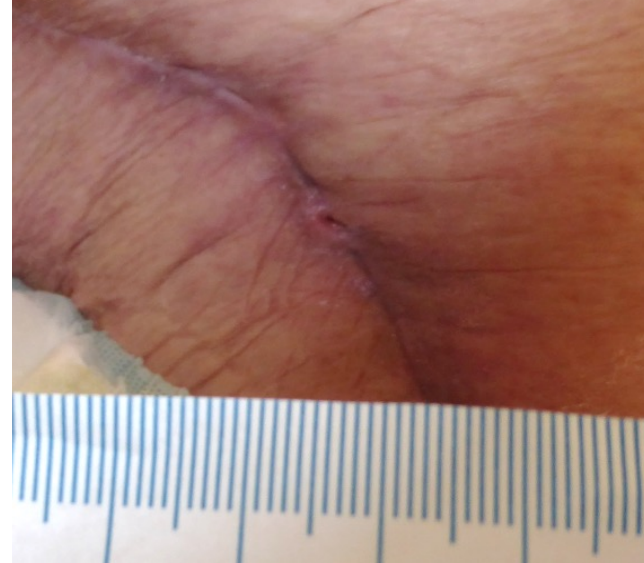
Case 2: 83-year-old female

14 days into treatment;

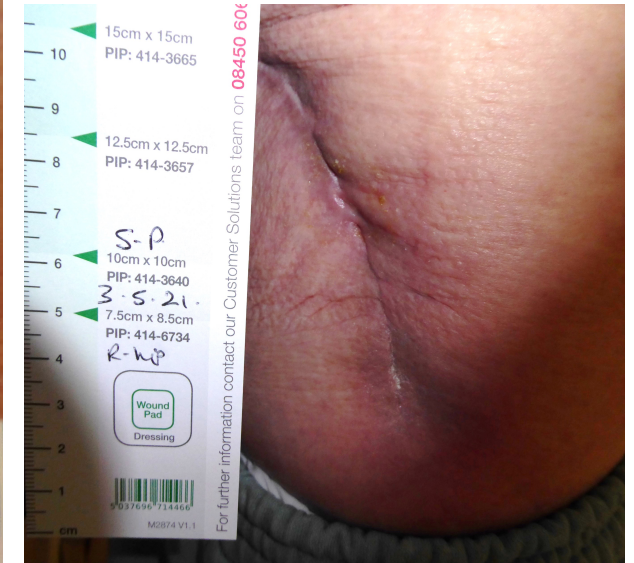
- 'Static' wound status
- 'Healthy' periwound status
- Reducing exudate volume.

Rated '**Excellent**' for:

- patient comfort,
- ease of removal,
- conformability and
- 'very good' for ease of application and
- absorption.



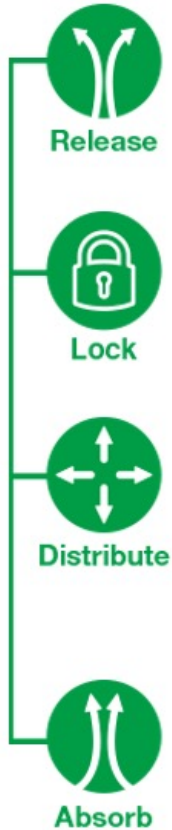
Initial assessment



14 days of treatment

Overall clinician score 9/10
Overall patient score 10/10

Suprasorb® P sensitive technology



Protective backing:

- Breathable with high moisture vapour transmission rate (MVTR)³
- Clear to allow monitoring of exudate without removal³
- Smooth and conformable¹⁰
- Fluid and bacterial barrier⁴

Super-absorbent core*

- Super-absorbent polymer fibres³
- Effective absorption capacity¹
- Reduces the risk of maceration⁹

Non-woven layer:

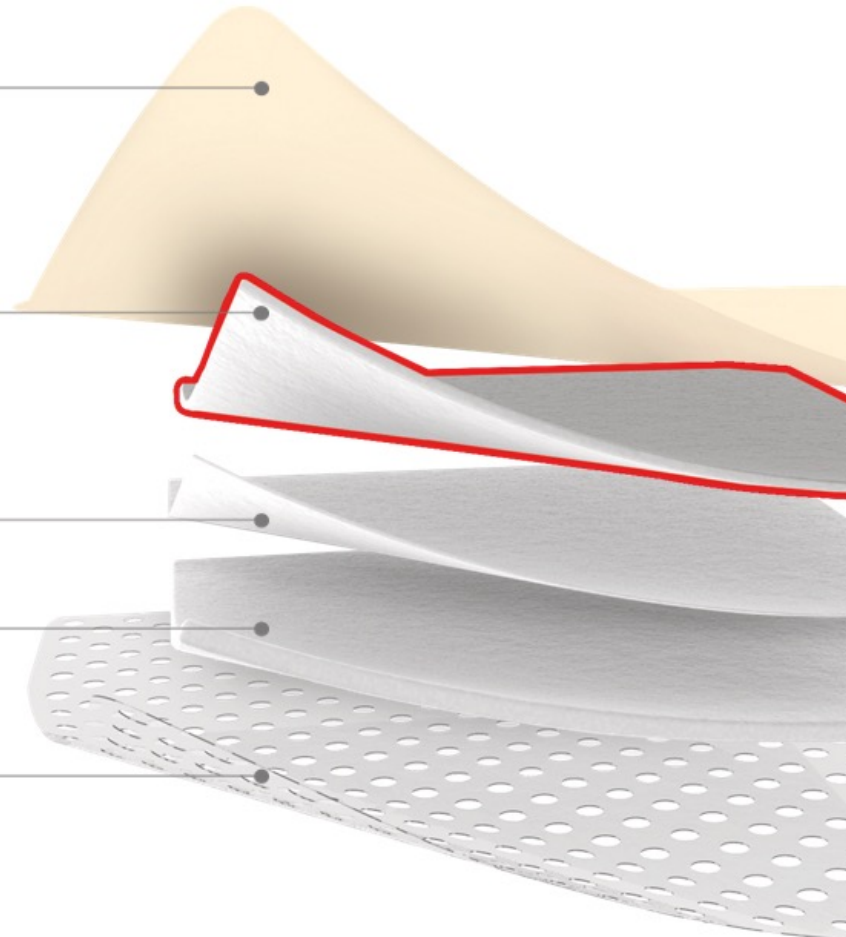
- Effective distribution of exudate maximising absorption efficiency³

Absorbent PU foam:

- Efficient exudate management⁸
- Provides comfort and a cushioning effect⁷

OptiSil silicone wound contact layer:

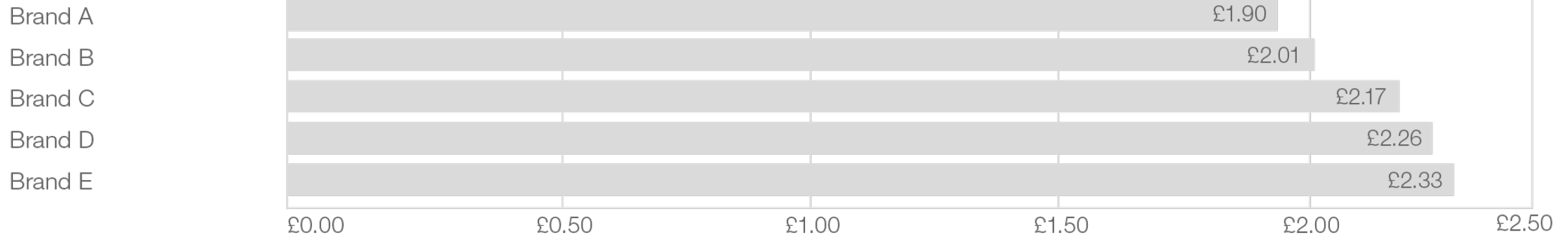
- Allows effective absorption of exudate into the dressing⁸
- Soft and low adherent silicone allows atraumatic dressing removal⁵



Gentle on patients, gentle on budgets

FP10 Drug Tariff

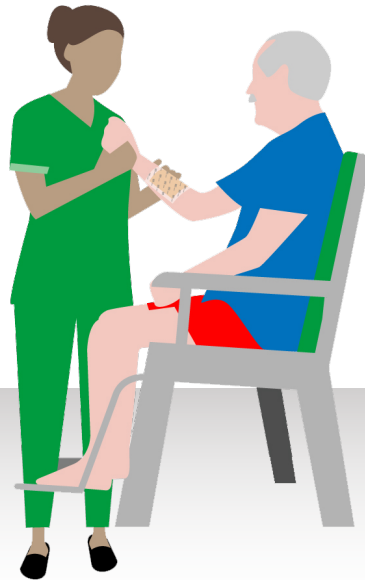
Suprasorb® P sensitive



Prices taken from Drug Tariff September 2021, Sizes 10x10 or closest alternative

Choose Suprasorb® P sensitive for your patients

- Request a sample pack and download the paper after this session
- Suprasorb® P sensitive is available on FP10, SBS and on NHS Supply Chain in November
- L&R are at hand to support throughout the process — get in touch today.





Live session featuring **Q&A**

References

- Barrett S, King B, Welch D, Scales A, Nockels S (2021) A 51-patient clinical evaluation of Suprasorb P Sensitive. *Wounds UK* **17**(3)
- Guest JF, Fuller GW, Vowden P (2020) Cohort study evaluating the burden of wounds to the UK's National Health Service in 2017/2018: update from 2012/2013. *BMJ Open* **10**:e045253
- World Union of Wound Healing Societies (WUWHS) (2019) Consensus Document. *Wound exudate: effective assessment and management*. Wounds International, London
- GPrX data (2020)

Discussing: **Suprasorb® P Sensitive**





Download your certificate

www.jcn-live.co.uk/virtual-lunch-meeting